

**THE WILDLIFE TRUST FOR BIRMINGHAM
AND THE BLACK COUNTRY LTD
(A Company Limited by Guarantee)**

**REPORT AND FINANCIAL STATEMENTS
FOR THE YEAR ENDED 31 MARCH 2018**

Company Number 01650938

Charity No. 513615

CONTENTS

YEAR ENDED 31 MARCH 2018

	PAGE
Trustees' and Directors' Report	1
Report of the Independent Auditor	31
Statement of Financial Activities	33
Balance Sheet	34
Statement of Cash Flows	35
Notes to the Financial Statements	36

**REPORT OF THE TRUSTEES
FOR THE FINANCIAL YEAR ENDED 31 MARCH 2018**

DIRECTORS' AND TRUSTEES' REPORT FOR THE YEAR ENDED 31 MARCH 2018

INTRODUCTION FROM THE CHAIR OF TRUSTEES

Annual Report Chair's Summary

Politically, as the UK prepares to leave the European Union, there remains concern about the potential loss of environmental protection, locally however wildlife and natural spaces are benefitting from greater protection as The Wildlife Trust for Birmingham and the Black Country has grown stronger, more resilient and is achieving greater impacts for nature.

Over the last year the Trust has worked hard locally to foster partnerships with other environmental groups, aligning our messages and speaking with a single voice for nature to cut across competing political agendas. Our work on this has been recognised; raising the profile of the environment and the Trust with key decision-makers.

Our new membership team has worked hard to strengthen our relationship with you, our members, who are more committed than ever to protecting local wildlife. We have loved hearing your stories, seeing your photos and meeting you at events, please keep sharing experiences and pictures of your explorations of the natural green space around our area.

We have also built stronger relationships with our key funders, the Esmée Fairbairn Foundation, Heritage Lottery Fund, People's Postcode Lottery and charitable trusts such as Saintbury, Roughley and Martann. These funders not only support our work by recognising the importance of urban nature conservation in helping reverse the decline in biodiversity; but also understand the vital role access to quality natural spaces plays in the health and happiness of the population.

We are delighted to present to you our Annual Report for the financial year 2017 to 2018. We hope you enjoy reading about the highlights and look forward to working with you as we continue to stand up for our local wildlife together.

Signed



Simon Needle

Chair of Trustees

**REPORT OF THE TRUSTEES
FOR THE FINANCIAL YEAR ENDED 31 MARCH 2018**

1. Trustee Report for Financial Year 2017-2018

The Board have pleasure in presenting their report together with the audited accounts for the year ended 31st March 2018. The Board have adopted the provisions of the *Charities SORP (FRS102) – Accounting and Reporting by Charities: Statement of Recommended Practice* applicable to charities preparing their accounts in accordance with the *Financial Reporting Standard* applicable in the UK and Republic of Ireland (effective 1 January 2015) in preparing the annual report and financial statements of the charity. The accounts have been prepared in accordance with the Companies Act 2006.

2. Objectives and activities

The Wildlife Trust for Birmingham and the Black Country Limited is required by charity and company law to act within the objects of its Memorandum of Association, which are as follows:

2.1 Objectives

The Wildlife Trust for Birmingham and the Black Country's objectives are:

1. For the benefit of the public, to advance, promote and further the conservation maintenance study and protection of: **(Strategic Goal 1: Space for nature is protected, restored, created and valued.)**
 - I. wildlife and its habitats;
 - II. places of natural beauty;
 - III. places of zoological, botanical, geographical, archaeological or scientific interest;
 - IV. features of landscape with geological, physiographical, or amenity value;

in particular, but not exclusively, in ways that further biodiversity.

2. **To advance the education of the public in: (Strategic Goal 2: Everyone is connected to nature):**
 - I. the principles and practice of sustainable development;
 - II. the principles and practice of biodiversity conservation;

in particular, but not exclusively, in urban areas.

We launched our five-year strategy for 2017 – 2022, *A Greener Future*, in November 2016.

Our Vision is for Birmingham and the Black Country to have more wildlife, more wild places and more people with a strong connection to the natural world every year.

Our Strategic Goals are:

1. Space for nature is protected, restored, created and valued.
2. Everyone is connected to nature.
3. The natural environment is at the heart of planning, policy- and decision-making.
4. We are an effective organisation.

**REPORT OF THE TRUSTEES
FOR THE FINANCIAL YEAR ENDED 31 MARCH 2018**

2.2 Activities

The Wildlife Trust for Birmingham and the Black Country's activities, to meet these objectives are:

Conservation Activities:

1. To manage our portfolio of land holdings for the benefit of wildlife (Goal 1)

The Trust directly manages 7 nature reserves and works with another 2 additional sites for the benefit of people and wildlife:

1. Moseley Bog and Joy's Wood, long-term lease with Birmingham City Council
2. Turner's Wood, owned by the Trust
3. Deer's Leap Wood, owned by the Trust
4. Park Hall, long-term lease with the Environment Agency, currently in possession of HS2 Ltd.
5. EcoPark, long-term lease with Birmingham City Council
6. Centre of the Earth, land on long-term lease with Birmingham City Council, building owned by the Trust
7. Portway Hill (part of the Rowley Hills), owned by the Trust.

The Trust has a management agreement with City of Wolverhampton Council to work with the local community (Friends group) to manage Peascroft Wood site for nature. The Trust also works with the Friends of Hill Hook to manage their site to improve biodiversity.

We run regular volunteer days at each of these sites connecting people to their local environment, managing and improving the habitat for wildlife and identifying ways to improve the biodiversity of these sites.

2. To deliver a Living Landscape that is connected and resilient where nature thrives (Goal 1)

The Trust is the lead partner of the Birmingham and Black Country Nature Improvement Area, and for the past seven years has lead development of the ecological strategy and delivery of nature improvement works across the area to achieve the strategy.

The Trust works with and advises landowners, private and public, to identify changes to management that will improve biodiversity and provide habitat for wildlife that fits into existing management regimes and budgets.

The Ecological Strategy underpins all practical nature conservation work, identifying the sites that contribute most to the ecological network and the actions that will achieve the greatest benefits for biodiversity.

3. To advocate on behalf of the natural environment protecting green and blue spaces and the resilience of the ecological network through planning, policy and across all developments (Goal 3)

Working with and through well-established networks including (but not limited to) the Local Nature Partnership, Nature Improvement Area partnership, Biodiversity Partnerships, Catchment Partnerships and Local Sites Partnership, the Trust works to influence planning and policy to benefit the natural world.

**REPORT OF THE TRUSTEES
FOR THE FINANCIAL YEAR ENDED 31 MARCH 2018**

EcoRecord, The Local Environmental Record Centre for Birmingham and the Black Country, is the Trust's scientific unit collecting, analysing and communicating the information about habitats and species across the Birmingham and Black Country area. EcoRecord provides the scientific evidence behind the ecological strategy and informs how the Trust's resources are used to achieve the greatest impact. EcoRecord has service level agreements with Birmingham City Council, Dudley Metropolitan Borough Council, Sandwell Metropolitan Borough Council, Walsall Metropolitan Borough Council, City of Wolverhampton Council and the Environment Agency and is supported by a large network of volunteer recording groups and individual recorders.

People & Wildlife Activities

4. To engage with the population of Birmingham and the Black Country, enabling them to connect with, value and choose to protect their local natural environment (Goal 2)

The Trust's education, community events and training programmes connect people to their local wildlife sites, inspire people to take action to protect nature and empower communities with the skills and knowledge to manage space for nature. The Trust believes our well-being depends on nature and that it is important for all of our health and well-being to spend regular time in natural spaces.

Our education programme provides an opportunity for pupils of all ages to visit green spaces, learn about wildlife, explore and take risks in a safe environment. Pupils learn practical skills, acquire knowledge about their natural environment and improve their communication and team-working skills. They develop in confidence and self-esteem, while getting physical exercise in the outdoor environment.

Our community events programme provides a range of activities for all ages and abilities including bug hunts, phenology walks, Nature Tots, Wildlife Watch for children, bat walks, Fungi Forays and many more.

Our training programme provides adults with opportunities to develop practical nature conservation and identification skills. We provide volunteering and work experience opportunities, run courses ranging from green wood working to coppicing for individuals and community groups, and have developed an accredited training programme.

Fundraising & Development Activities

5. To achieve greater impacts by increasing our unrestricted income to spend on charitable purposes through membership, legacies and fundraising (Goal 4)

Our members are the life-blood of the Trust. They are the voice for nature in their communities, they are the Trust's volunteers, campaigners and ambassadors. The membership fees provide the Trust with vital unrestricted income that enables us to deliver practical work to achieve our strategic goals. Membership fees are used to protect nature through the planning system, to continually manage our sites for the benefit of wildlife, to work with volunteers, to ensure our staff are safe and supported, and to ensure we can work in diverse communities connecting people to their natural environment.

**REPORT OF THE TRUSTEES
FOR THE FINANCIAL YEAR ENDED 31 MARCH 2018**

Our corporate, legacies and fundraising programmes are emerging to increase our unrestricted income and achieve greater impacts.

Resources Activities

- 6. To ensure we are financially sustainable, focused and effective, making the best use of all our assets (Goal 4)**

We seek value for money in everything we do, and work hard to diversify our income streams to achieve a sustainable financial base for the Trust. We meet our Reserves Policy, set by Trustees, and have a plan for all of our sites to generate income wherever appropriate.

- 7. To support all our people to achieve great outcomes for wildlife (staff, volunteers, partners, members)**

We invest time and resources into our staff, volunteers and the communities we work with to increase their skills, ensure they feel valued, and are able to achieve their full potential to have a positive impact for wildlife.

3. Significant Activities.

Goal 1: Space for nature is protected, restored, created and valued.

Birmingham and Black Country Nature Improvement Area:

The Birmingham and Black Country Nature Improvement Area (NIA), designated by DEFRA in 2012, is our main opportunity to achieve a Living Landscape. Working at a landscape-scale means protecting, improving and creating vibrant, wildlife-rich green spaces throughout the conurbation. These connect both wildlife and people to high quality natural areas, providing many benefits and contributing to mitigating the effects of climate change.

**REPORT OF THE TRUSTEES
FOR THE FINANCIAL YEAR ENDED 31 MARCH 2018**

In this financial year the Trust has improved 37 sites (42 hectares of public open space) for nature funded by Esmée Fairbairn Foundation including the improvement of 27 hectares of woodland, 12 hectares of grassland and 3 hectares of wetland. We have also planted or restored 1,708 metres of hedgerow and naturalised 612 metres of watercourse.

HIGHBURY PARK, SOUTH BIRMINGHAM

Working with the Friends of Highbury Park through the NIA, the Trust has improved and expanded the woodland north through the site. This picture was taken 27th February 2018 and shows the dead-hedge the volunteers created from the coppice work undertaken in the plantation block. It was the 4th block of woodland we have helped improve within the Highbury Park grounds and is now starting to show a progressive coppice rotation within the woodland blocks from the first year to the last. There are now great examples of hazel stool regeneration with blossoming field-layer flora which was introduced in the first year, allowing the rare opportunity in Birmingham and Black country to show coppice management in action and the products and resources which can be generated from the woodland, along with the increased diversity and structure it creates from its management.



Your Award Winning Wildlife Trust

The NGO Impact Award was awarded to The Wildlife Trust for Birmingham and the Black Country by the Chartered Institute of Ecology and Environmental Management (CIEEM) at a lunch in London on 21st June 2017 after the team were nominated by Trustee Melanie Knight, beating off competition from the National Biodiversity Network and London Wildlife Trust (See photo on Page 7)

The NIA is a large-scale Living Landscape initiative first funded by Government in 2012, this year funding has been continued by the Esmée Fairbairn Foundation. The Wildlife Trust team has led the partnership that has so far seen 250 sites across Birmingham and the Black Country improved for nature, with 220 hectares of woodland, meadow and heathland enhanced for wildlife and helped by over 5,000 volunteers.

Notable projects include poor quality under used open space in Castle Vale being turned into a wildflower meadow where for the first time, hundreds of green winged orchids grew this year.

Simon Atkinson, Conservation Manager, The Wildlife Trust for Birmingham and the Black Country said:

‘We were delighted to receive this award from CIEEM. This is a win for all the partners, community groups and volunteers that have worked together to help nature thrive across the region, but most of all it’s a win for urban wildlife.’

REPORT OF THE TRUSTEES

FOR THE FINANCIAL YEAR ENDED 31 MARCH 2018



WILDLIFE TRUST SITES

Hill Hook LNR: Completed a major refurbishment of a long section of boardwalk and bridge through the wet woodland funded by The Friends of Hill Hook Local Nature Reserve. An intermittent pollution incident has adversely affected the stream entering the pool and has been reported to the Environment Agency and Severn Trent. Wetland woodland and swamp areas have been colourful in spring with marsh marigold and wood anemone and a large area of moschatel is notable.

Ongoing work to manage the habitats and maintain and improve access continues by the Friends of Hill Hook Local Nature Reserve, with excellent support from a range of funders in particular the Sutton Town Council and the National Lottery.

Portway Hill: The Nature Improvement Area enhanced meadow is developing well with a common spotted orchid present for the first time. The site has now been put on a cut rotation to help support species overwinter in the longer grass roots and standing stems. The Friends of Rowley Hills volunteer group supports the Trust with great work and increased numbers under a new Chair. We await the outcome of the Black Country Geopark application to UNESCO in 2020 with the site identified as Geopark 23.

Deer's Leap Wood: Extensive work has been carried out by the Trust with volunteers including the Friends of Deer's Leap and Deer's Leap Residents Association to open up paths in the north of the site and linking along the Shireland Brook which is now being used by local walkers. Wetland species such as flag iris, marsh marigold and brooklime are establishing well from planted coir mats. The meadow area is becoming more colourful with a wide range of species including ox-eye daisy, cowslip, field scabious, lady's bedstraw, bird's foot trefoil, lesser spearwort, false fox sedge and meadow barley. The Tesco Bags of Help funded path work has naturalised very well and increasingly has allowed many more visitors to enjoy the reserve.

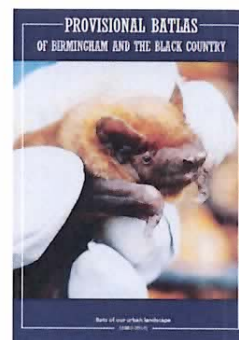
**REPORT OF THE TRUSTEES
FOR THE FINANCIAL YEAR ENDED 31 MARCH 2018**

Moseley Bog and Joy's Wood: This year, with the support of the Friends of Moseley Bog and Joy's Wood, we successfully completed a Veolia-funded project which saw the restoration of habitats including an area of species-rich lowland fen - which had become degraded due to colonisation by scrub, artificial drainage and pollution – ponds, wet woodland and the Coldbath Brook. Work was also carried out to improve visitor access through the repair of existing and installation of new boardwalks. Not only has the work enabled easier access for people visiting the reserve, but this has also lessened the adverse impacts of footfall such as trampling of wildflowers including the populations of native bluebell and wood horsetail. The project saw the Trust engage with 138 people as well as the local community at the many events that were delivered to inspire adults and children about the wildlife and history of Moseley Bog.

Turner's Wood: The Trust secured funding through Awards for All and Tesco Bags of Help to improve access to the site allowing the Trust to run sessions with local school children from St Michael's Primary School. Improvements include tree safety works, creating a seating area, installing permeable foot paths and building a wooden chalet so activities can continue in wet weather. The funding has allowed the Trust to improve the biodiversity of the site by planting trees and a hedgerow. We continue to manage the wood to ensure a good variety of habitat and species; in particular, the bluebells. The habitat of the woodland is great for birdlife with a variety of birds spotted from buzzard, tawny owl and woodpeckers to many small species.

Peascroft Wood: This year has seen the completion of the three and a half year Heritage Lottery funded project that has seen a huge improvement in the site: from work to improve the paths, woodland management work and restoration of the meadow to a wide range of events, including family events, guided walks and sessions for local primary schoolchildren, increasing the biodiversity of the site and its use by local people – all with the help of the amazing volunteers. With the funding coming to an end, the volunteers also worked hard to improve the support of the local community for the site. The securing of an Awards for All grant to continue our work at the site for another year and to deliver training for the group to help them run their own volunteer days in the future was also achieved.

EcoRecord: This year we worked with BrumBats to publish the Provisional Batlas of Birmingham and the Black Country. The Batlas is the first publication of its kind in our area and explores records of all 12 bat species recorded in B&BC between 1983 and 2014. These records can be visualised through a series of engaging maps describing the distribution and abundance of bats across the conurbation and are accompanied by a useful account for each species/groups of species.

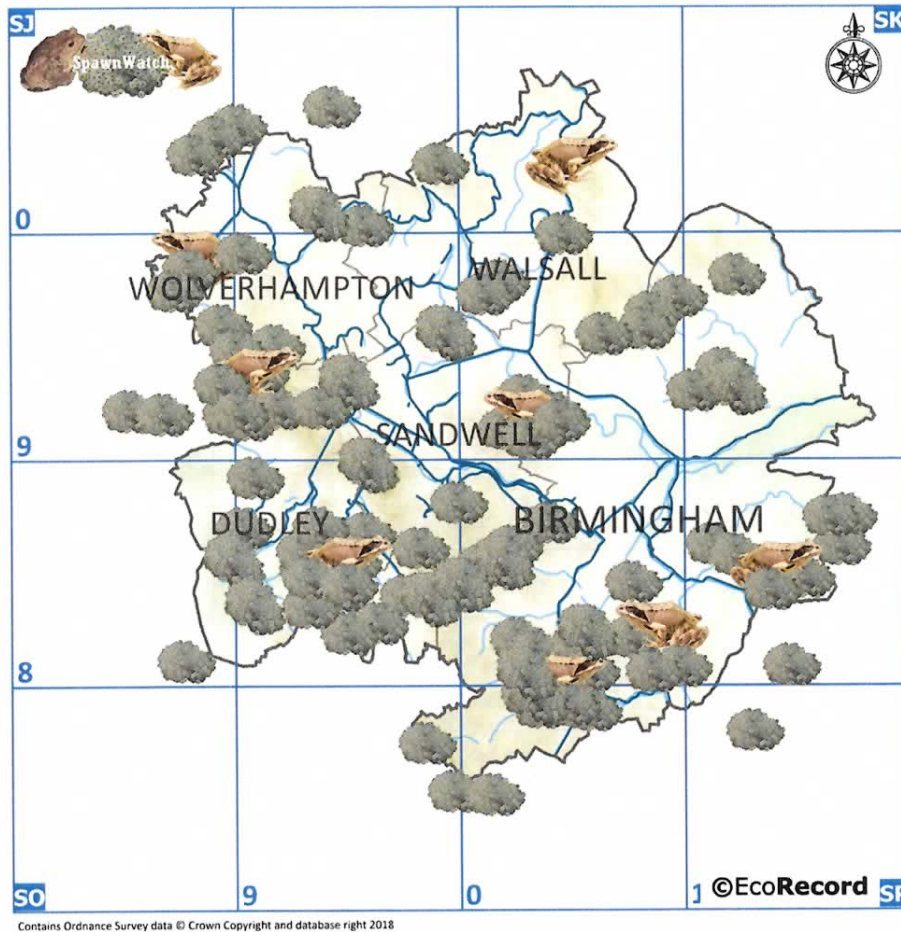


The provisional Batlas is available to [download from here](#).

During the spring we launched our first ever SpawnWatch survey. The survey, which was run in collaboration with the Birmingham and Black Country Amphibian and Reptile Group, aimed to find out more about the current places where frogs and toads are breeding in the conurbation. We asked people to let us know the date they first spotted frog or toad spawn in their local or garden ponds. The survey generated a number of very useful breeding records of these important amphibians as well as records of other garden wildlife.

**REPORT OF THE TRUSTEES
FOR THE FINANCIAL YEAR ENDED 31 MARCH 2018**

The results of SpawnWatch 2018 are shown on the map below. We are looking forward to running **SpawnWatch** next year as, given its success, we now plan to run it as an annual survey.



Goal 2: Everyone is connected to nature.

The Trust's Education Team has developed our education program to include a range of new and exciting sessions that take an interdisciplinary approach to learning outdoors. All these new sessions have clearly defined learning outcomes linking to the current curriculum, follow-up classroom resources and feedback forms for pupils and teachers. The team has also developed a Wild School Roadshow which is unique to our Trust and offers schools the chance to have us for the day working with different classes in their school grounds. This is all ready to roll out for the 2018-2019 school year.

EcoPark, the Trust's primary environmental education centre, continues to receive over 6,000 child visits over the year. We have an excellent relationship with local schools who visit regularly and we are attracting new schools to visit each year.

The Trust was successful in our bid to the Heritage Lottery Skills for the Future Fund to create a paid traineeship programme with partners including Birmingham City Council, City of Wolverhampton Council, Walsall Metropolitan Borough Council and Warwickshire Wildlife Trust. Natural Prospects will create 24 paid traineeships over the next 4 years; training the next generation of urban conservation workers and increasing the diversity of our workforce.

**REPORT OF THE TRUSTEES
FOR THE FINANCIAL YEAR ENDED 31 MARCH 2018**

Our exciting and varied engagement programme has attracted 3,154 people to 124 events. Some of the most popular included our range of walks at Moseley Bog, holiday programmes for families at EcoPark and Centre of the Earth and Wildlife Roadshows in Birmingham, Dudley, Wolverhampton, Walsall and Sandwell.

Players of the People's Postcode Lottery continue to support our forest school and outdoor education work. The holiday programme enabled 260 families to have fun learning about nature at EcoPark and Centre of the Earth.

The Trust also developed two new health and well-being programmes. Working in partnership with Birmingham Wellbeing Service, we provided over 500 opportunities for people to take part in active outdoor events and volunteer days. We also began delivering 8 week courses introducing the health and well-being benefits of being active in nature, which resulted in significant positive impacts for participants.

Goal 3: The natural environment is at the heart of planning, policy- and decision-making.

The Trust worked with a wide range of partners to Give Nature a Voice throughout this period.

Working with Birmingham and Black Country, and Coventry, Solihull and Warwickshire Local Nature Partnerships (LNPs) the Trust organised a hustings for West Midlands Combined Authority Mayoral Candidates ahead of the May 2017 elections. All candidates committed to working with us to ensure the environment was integral to decision making and we have worked together to ensure this commitment is upheld by the successful candidate, Andy Street.

We developed a spatial plan for the West Midlands Combined Authority area, launched a pledge for nature signed by hundreds of people setting out a vision for the natural environment and committing to doing all they can in their lives to make this a reality. The pledge also called for strong leadership through long-term planning and decision making. Through this work the Trust's CEO has been given a place on the newly established West Midlands Combined Authority Environment Board.

Working with the BBCLNP the Trust has responded to consultations on the future of parks and the government's 25 Year Environment Plan. As a result of the last response the Trust's CEO, as Chair of the LNP, was asked to give evidence as an expert witness to the Environmental Audit Committee on the 25 Year Environment Plan stating that greater attention needs to be placed on urban nature conservation as space for nature is incrementally being lost every year.

The Trust continues to respond to planning applications according to our resource and capacity. This is an essential area of work that relies on membership funding. The Trust responded to 14 large scale planning applications. This is an area that the Trust will need to grow in the next financial year due to the large amount of developments planned by local authorities.

The Trust works with local authorities to support management and protection of local wildlife sites including through the Local Sites Partnership. During the period of this report the Trust has given advice on 19 local wildlife sites to secure their status and protection. The Trust is also working to secure additional protection for local wildlife sites through the Black Country Core Strategy Review.

REPORT OF THE TRUSTEES

FOR THE FINANCIAL YEAR ENDED 31 MARCH 2018

Goal 4: We are an effective organisation

This year has seen the development of our Business Plan setting out how we will achieve our strategic goals. The Business Plan demonstrates the Trust is capable of sustainable growth each year through gradually increasing the services we offer, that support our charitable aims, and generating unrestricted income.

Our lease expired on Greenfield Crescent in November 2017 and saw the Trust bring back into use our Centre of the Earth site. Previously an environmental education centre that had not been in use for 5 years, Centre of the Earth has had some investment to create a new Head Office for the Trust in an urban nature reserve next to the Soho Loop canal. Already we have spotted a wide variety of species including a sparrowhawk, a green woodpecker and we discovered otter spraint along the canalside. The move to Centre of the Earth has allowed the Trust to invest in one of our assets and reduced our overhead costs.

Membership

We are focusing on increasing our membership to ensure there are more people taking action for nature, and to increase our unrestricted income allowing the Trust to pioneer new projects, manage our nature reserves and protect nature through the planning system. A key area of our strategy is to recruit new members through our website. In 2016-2017 the number of new members recruited through the Trust website was 35 however this grew to 73 in 2017-2018 as a result of improvements to processes, the web-based form and increased online promotions - that's a growth of over 108%. Further improvements to enable more new memberships via the website are also planned for 2018-2019.

Connecting people with nature

During the course of the year the number of people who have subscribed to our e-newsletter is up by 30% enabling us to connect with an increasingly expanding network of supporters.

The Trust's Facebook engagement has also risen significantly from an average of 580 engagements per month to an average of 3,000 engagements per month with plans to double in the next financial year.

Over the course of 2018-2019 we will be formalising our Communication Strategy incorporating a wide variety of platforms to communicate with various audiences from sharing information about the Trusts' work, recruiting new members and encouraging wildlife conservation action.

Investing in Wildlife

Without support from all our members, corporate partners, grant funders and everyone who donates to the Trust we couldn't achieve our goals. We want to say a big thank you to everyone who invested in the wildlife of Birmingham and the Black Country during 2017 – 2018.

REPORT OF THE TRUSTEES

FOR THE FINANCIAL YEAR ENDED 31 MARCH 2018

Schools & Clubs	Funders	Partners & Supporters
St Gregory's Primary School	Martann Trust	Birmingham City Council
Ark Chamberlin Primary Academy	Esmée Fairbairn Foundation	Catchment Partnerships
Bordesley Village Primary School	Roughley Trust	Black Country Consortium
Clifton Primary School	Saintbury Trust	Birmingham Open Spaces Forum
Marlborough Infants School	Players of the People's Postcode Lottery	Canal and Rivers Trust
Kings Norton Primary School	RSWT	Castle Vale Community Environmental Trust
Marlborough Junior School	Veolia	Buglife
Niskam Primary School	Joyce Farley Educational Trust	NIA Partnership Forum
Oasis Academy Foundry	Big Lottery Fund	Professor Ian Trueman
Redhill Primary School	Heritage Lottery Fund	Friends of Hill Hook
Somerville School	Birmingham City Council	Friends of Moseley Bog & Joy's Wood Nature Reserve
Stratford Road Playgroup	Birmingham Natural History Society	Friends of Deer's Leap Wood
Blakesley Hall Primary	Dudley MBC	Deer's Leap Residents Association
Woodhouse Primary	Environment Agency	Friends of Rowley Hills
Oldknow Academy	Natural England	Friends of Moorcroft Wood
Guardian Angels Primary	Severn Trent Water	Martineau Gardens
Bordesley Green Primary	National Grid	Northfield Ecocentre
Starbank Primary	Walsall MBC	Birmingham City University
Hobmoor Academy	Sandwell MBC	University of Birmingham
St Bernadettes RC Primary	City of Wolverhampton Council	Birmingham & Black Country Local Nature Partnership
St Benedicts Infants School	Woodsetton Charitable Trust	The Royal Society of Wildlife Trusts and the all Wildlife Trusts
City Road Primary School	Tesco Bags of Help	Brumbats
Villiers Primary School	Charles Brotherton Trust	The vast community of recorders who work with us throughout the year
Palmers Cross Primary School	Peter Storrs Trust	University of Wolverhampton
	CB & HH Taylor 1984 Trust	St. Barnabas Church, Erdington
	Limoges Charitable Trust	MAC Birmingham
	Warley Woods Community Trust	Friends of Brandwood End Cemetary
	Edward Cadbury Charitable Trust	Castle Vale Allotments
	Garfield Western Foundation	Birmingham Botanical Society
	Cole Charitable Trust	Ellen Pisolkar
	Lady Tangye Charitable Trust	Mike Poulton
	Children in Need	Vine House Farm
	Woodland Trust	South Staffordshire Water

**REPORT OF THE TRUSTEES
FOR THE FINANCIAL YEAR ENDED 31 MARCH 2018**

Schools & Clubs	Funders	Partners & Supporters
		National Grid
		Birmingham Well-being Service
		Siemens Plc

Public Benefit

The advancement of environmental protection and improvement is recognised as a charitable purpose and is regarded universally as producing a public good. The Wildlife Trust for Birmingham and the Black Country exists to promote the care and protection of the environment and therefore provides a clear public benefit. The Wildlife Trust's philosophy is based on the belief that the natural world deserves conserving for its own sake and, since this is widely perceived to be a worthy aim of public policy, it may fairly be regarded as a benefit to the public at large. However, the public benefits provided by The Wildlife Trust for Birmingham and the Black Country go much further.

Firstly, our nature reserves are used by the public, and many have access on way-marked routes. At most sites information and interpretation is provided to visitors. There are a few cases where there may be a conflict between management requirements and unfettered access, but where this occurs we strive to keep any restrictions to a minimum.

Secondly, our education programmes are aimed at schools, colleges, adult groups and the wider public. Education is also, of course, recognised as a charitable activity in its own right.

Thirdly, our information gathering and provision of expert advice and opinion to local authorities and others helps to ensure that planning decisions are made on a rational basis taking full account of the public benefit of wildlife.

Fourthly, we can exert influence through our membership at local level, and nationally through our membership of the Royal Society of Wildlife Trusts. It is also our belief that the involvement of many volunteers in our work provides an outlet for altruistic endeavour, which is of special benefit to those involved as well as delivering benefits to the wider public.

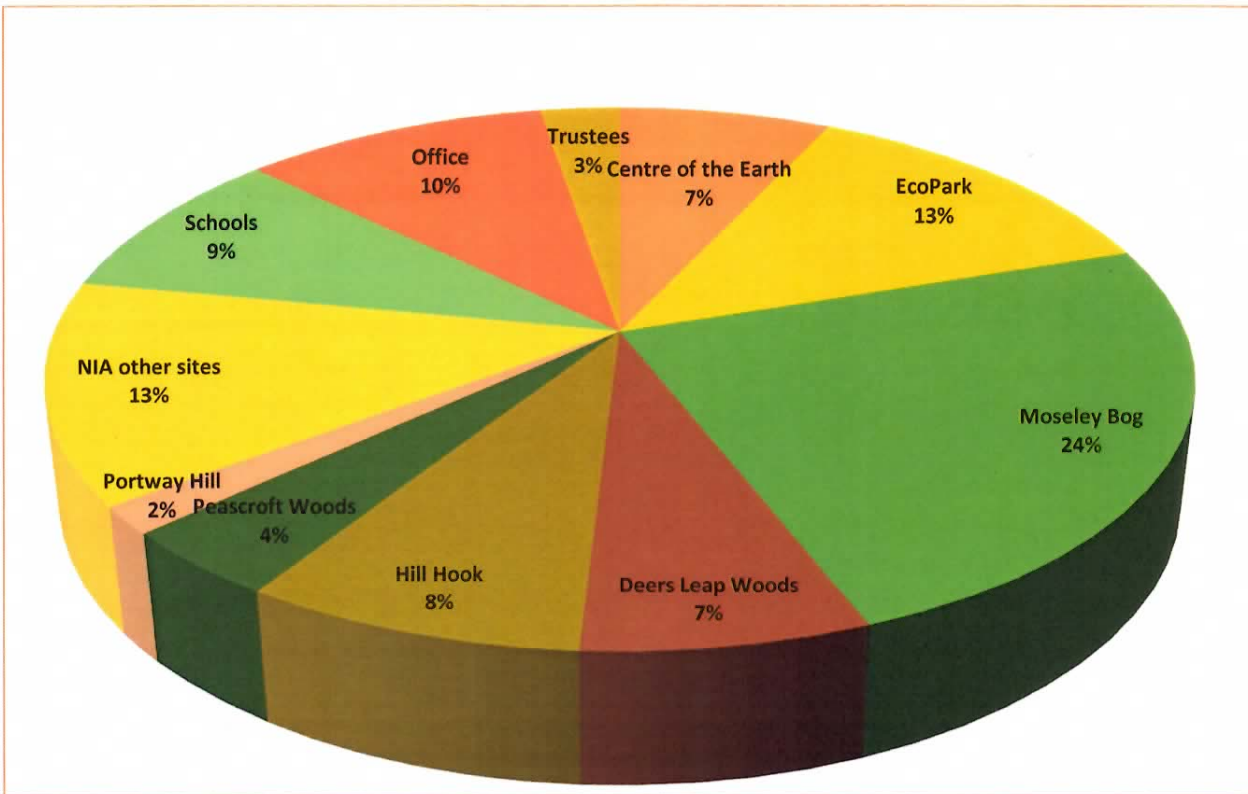
Promoting the enjoyment of the natural world is an important part of what we do: contact with the natural world and the appreciation of wildlife and wild places provides great pleasure to many people and contributes towards wellbeing and health. Our nature reserves and activities are available to all and we try to make special provision for the disabled and disadvantaged wherever possible.

In shaping our objectives for the year and planning our activities, the trustees have considered the Charity Commission's guidance on public benefit, including the guidance 'public benefit: running a charity (PB2)

**REPORT OF THE TRUSTEES
FOR THE FINANCIAL YEAR ENDED 31 MARCH 2018**

Volunteers

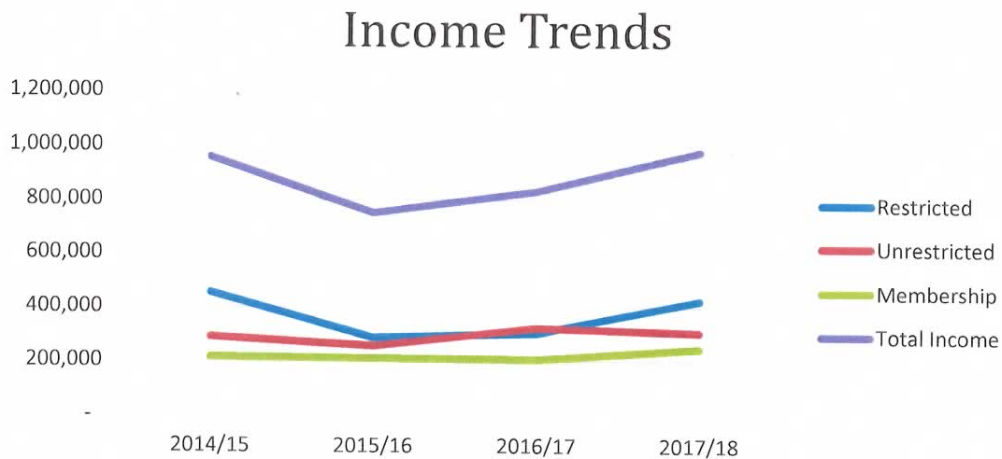
To achieve our goals we depend on the hard work and dedication of a large team of volunteers who work with us at our nature reserves, respond to planning applications, attend events, manage our website and so much more. Over the past 12 months the Trust has worked with **1,885** volunteers who between them have contributed an amazing **8,161** hours. We couldn't do our work without these amazing people, thank you. A breakdown of the main areas of volunteering is shown below:



**REPORT OF THE TRUSTEES
FOR THE FINANCIAL YEAR ENDED 31 MARCH 2018**

Financial Review

Income



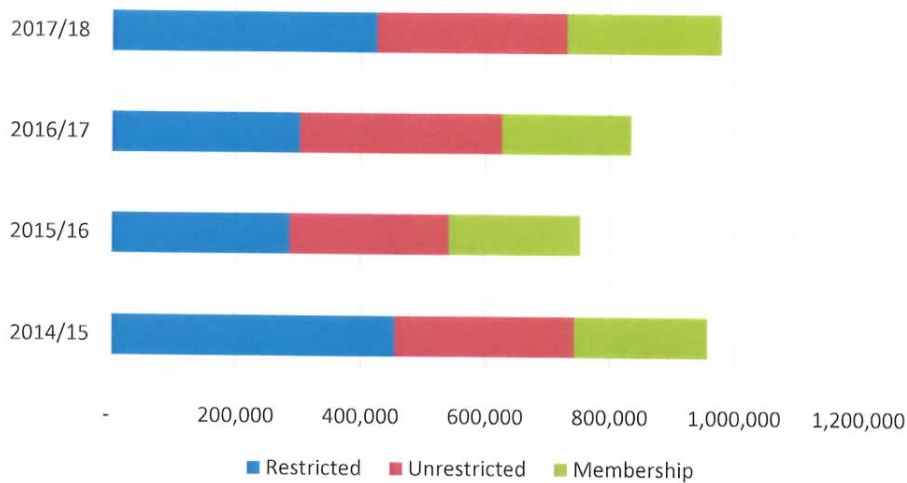
Trust income is split between unrestricted and restricted funds. **Unrestricted** income represents money raised or given to support the Trust's achievement of core charitable aims. Membership, donations, general fundraising and some charitable trust donations were given as unrestricted income.

Restricted income is given for a specific purpose with clear outputs to be achieved. Restricted income for this period includes Esmée Fairbairn Foundation funding for the Nature Improvement Area, and EcoRecord Service Level Agreements with local authorities. Restricted income is up against 2016/17 financial year due to increased project activity including the Veolia funded project to restore the fen at Moseley Bog and Joy's Wood.

Total income has increased from £833,812 in 2016/17 to £977,920 in 2017/18. In these graphs membership is separated from unrestricted income. The Trust has invested in membership as an essential income stream that enables us to deliver core charitable aims that are not always possible to fund through restricted income such as our work to protect nature through the planning system.

**REPORT OF THE TRUSTEES
FOR THE FINANCIAL YEAR ENDED 31 MARCH 2018**

Income Type £



The graph above shows the Trust’s financial growth over the past four years having recovered from the financial difficulties identified in 2014/15. Membership accounts for a quarter of the Trust’s income and the Business Plan sets out how this will grow over three years. Unrestricted income (including membership) is 57% of total income. The Trust aims for this to be 60% to represent a sustainable financial position.

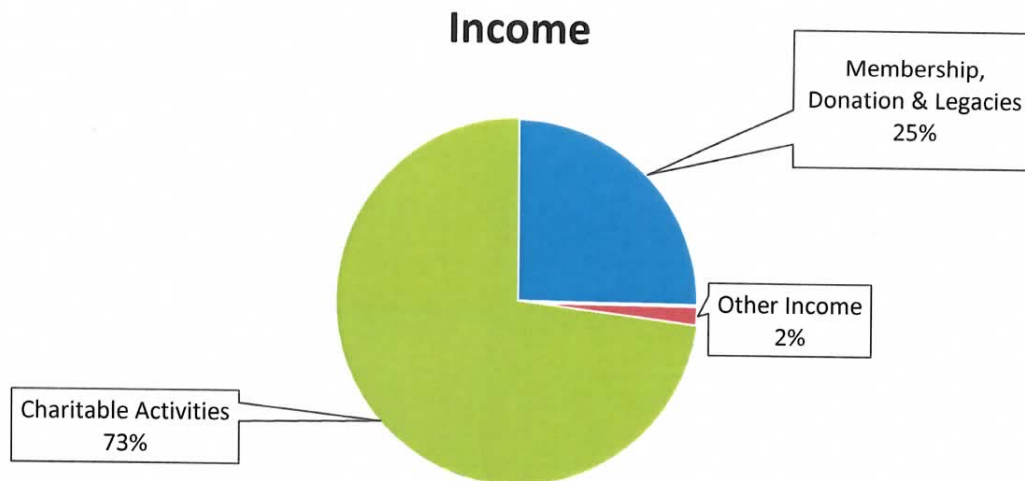
Trustees approve unrestricted income to be designated for specific purposes to achieve the Trust’s charitable aims, **Designated Funds**. These included People’s Postcode Lottery funds for forest school activities in Birmingham; Roughley and Saintbury Charitable Trusts funding for development of the Trust.

Income summary is below and comprises of

Membership, donations, legacies – Contains income from our members, donations given at events and through our presence in the community and legacies (we have had one legacy in 2017/18)

Charitable activities – Projects and services delivered in Birmingham & Black Country in line with the Trusts aims & objectives

Other income – Includes Royalties received, interest income, hire income and rental income



One of the biggest challenges for the Trust over the next few years will be to diversify our unrestricted income sources to provide resilience to the organisation. The other main focus will be to increase the donations and legacies received by the Trust (blue segment). Compared to other Wildlife Trusts nationally we achieve similar levels of funding through grants but are not performing as well in encouraging corporate partners and legacy donations. We will learn from our sister Trusts to improve our performance in these areas. We know we need to do more to secure our membership which is explained below.

Expenditure

The Trust's expenditure increased from £693,610 to £796,076 in 2017/18, which can be broken down as follows. Every penny we receive is spent on achieving our charitable aims. Overheads include rents for our sites, running our office and insurance to ensure we are a responsible and sustainable organisation.

Charitable Activity – This covers our staffing costs and direct project costs to deliver projects and services so as to meet our charitable aims and objectives

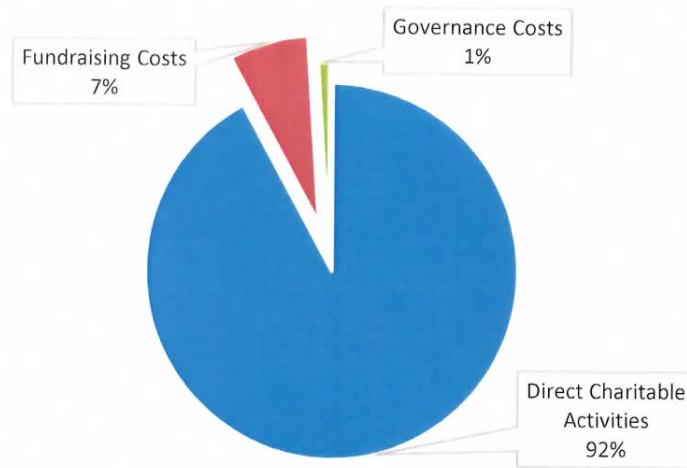
Fundraising costs – Fees paid to WFC for recruitment of new members

Overheads – These are the running costs of all our sites

REPORT OF THE TRUSTEES

FOR THE FINANCIAL YEAR ENDED 31 MARCH 2018

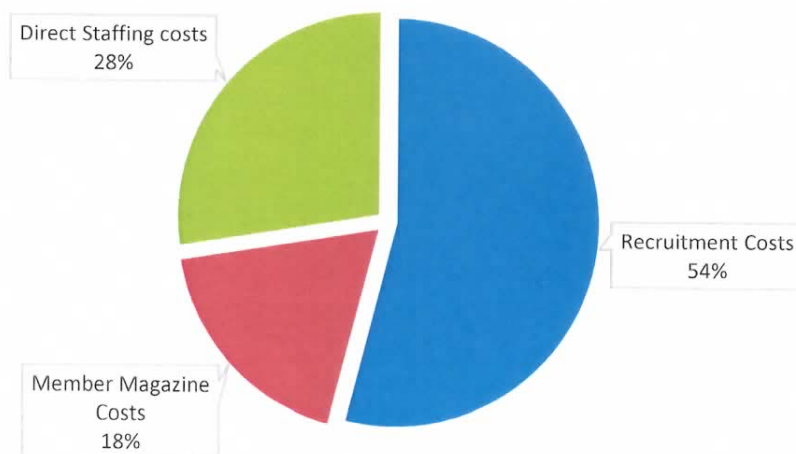
2017-18 Expenditure



Pensions: Royal London manage all pension funds on behalf of the staff members. The Trust contributes 7% in addition to staff contributions.

Membership Recruitment: Our membership expenditure is based on recruitment through Wildlife Fundraising Central (a company wholly owned by 8 Wildlife Trusts) and other Wildlife Trusts as well as production of the membership magazines throughout the year. The graph below shows the membership costs break down, these are included in the 'Fundraising' section of the expenditure graph above.

Direct membership Costs 2017/18



**REPORT OF THE TRUSTEES
FOR THE FINANCIAL YEAR ENDED 31 MARCH 2018**

Summary

The Trust's Unrestricted Reserves stands at £201,254 as at the 31 March 2018. This has provided the Trust several opportunities to develop work which will enhance the activities they currently do.

Trustees have decided to reinvest the following in 2018-2019 financial year:

- Re-invest £10,000 in Moseley Bog to continue to manage this vital site for people and wildlife
- Re-invest £10,000 in planning & biodiversity to protect nature through the planning system.

Reserves Policy

Trustees keep the reserves of the Trust under regular review. The Trustees have set a reserves policy to acquire sufficient free reserves equivalent to three month's core operating costs equating to approximately £100,000. Such reserves would be held in case of any sudden decline in income or unexpected cost or risk exposure, and to ensure that the commitments to meet contractual obligations to staff, premises and funding partners can be met.

The Trustees have met this aim with current unrestricted reserves standing at £201,254 at 31 March 2018, and instead, manage each element of expenditure on a risk assessment process, not committing to expenditure unless income is assured. The Trustees continue to be mindful of the requirement to operate within tight financial constraints.

Whilst there can be no certainty in relation to the timing and amount of charitable grants and receipts the Trustee Directors believe that the Trust's record of obtaining further funding will continue, albeit, with uncertainties as to when cash actually becomes available. The amount of restricted reserves at 31 March 2018 is £149,132.

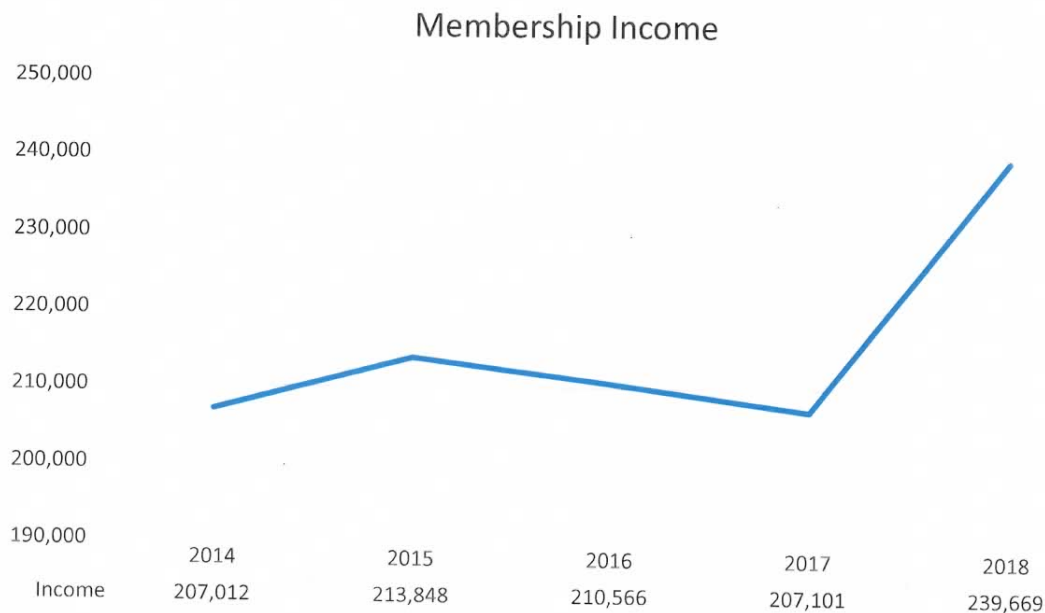
Thank you to all of you: Our Members

The support of our members is crucial to the Trust. With the generous donations from our memberships we are able to achieve our charitable aims, run events, work with schools and manage our sites for the benefit of wildlife. With member support over the past year we have been able to continue developing Moseley Bog and Joy's Wood delivering improvements for wildlife and offering events to engage more people with this jewel of a site. Our members have allowed us to continue standing up for wildlife through our advocacy work and responses to consultations, planning applications and changes to regional government; this work is difficult to fund any other way but is arguably one of the most important functions of The Wildlife Trust for Birmingham and the Black Country as the pressure for housing continues to grow.

**REPORT OF THE TRUSTEES
FOR THE FINANCIAL YEAR ENDED 31 MARCH 2018**



At the end of the 2017-2018 financial year we had 3,378 memberships (households) which is a slight decrease of 63 memberships from 2016-2017. Memberships include joint and family options. Whilst the number of memberships has fallen during this period the trend remains stable over previous years and the below demonstrates that despite the fall in memberships that the income from membership is increasing. During this period the Trust has invested in a full time Membership Officer and a full-time Communications Officer (previously incorporated into one full time role) and along with the long-term support from a dedicated Membership volunteer they have improved processes, relationships and communication channels with members through the member magazine and social media and improved the accessibility of on-line membership.



**REPORT OF THE TRUSTEES
FOR THE FINANCIAL YEAR ENDED 31 MARCH 2018**

Thanks to generosity of our members, our income has increased from £207,101 for financial year 2016 – 2017, to £239,669 for financial year 2017 – 2018. We are working hard to achieve a net gain in members for 2018 – 2019 financial year with various activities and marketing strategies from encouraging existing members to continue to support us by improving relationships, recognising long-term membership and delivering member-only events to pro-actively raise the profile of the Trust.

A total membership income of £239,669 was generated through the recruitment of new members and meeting the values and interests of existing members. Our expenditure to achieve this was £129,562. Our members are crucial to achievement of our core charitable aims as they are the advocates and ambassadors for nature in their communities. The expenditure on supporting these members directly contributes to our charitable aims and includes a full time Fundraising & Development Manager, a full time Membership Officer and a full-time Communications Officer. We are looking to recruit a part-time door to door membership recruiter during 2018-2019.

Recruiting new members is vital to the Trust's ongoing stability. The majority of new members are recruited through Wildlife Fundraising Central Ltd. WFC was set up in 2013 by 8 Wildlife Trusts to recruit new members. A total of £53,374 was paid by WTBBC to WFC in financial year 2017 – 2018.

The expenditure on membership figures also includes £10,190 in membership fees to be part of the federation of Wildlife Trusts nationally.

Case Study: We are an affective organisation

Thanks to funding from Heritage Lottery Transition Fund we have been developing our membership database system, Subscriber, into a full Contact Relationship Management system which will massively improve our workflow. Subscriber is designed as an organisation-wide solution encompassing contacts from all departments. This information can be shared across the whole Trust providing a full profile of the interaction and impact on the Trust. We have previously only used the database for membership purposes but now developing the use of other elements for volunteering, events, fundraising and merchandise. This development will also include integration and synchronisation with our website, which will effectively improve our process and speed up our administration.

Our Impact in Numbers

The Wildlife Trust for Birmingham and the Black Country Achievements	31.3.00	31.3.05	31.3.10	31.3.15	31.3.16	31.3.17	31.3.18
These figures provide a snapshot in time of the work of The Wildlife Trust for Birmingham and the Black Country. The figures are independent for the financial year of the report.							
SPACE FOR NATURE							
Number of nature reserves owned by WTBBC	0	0	0	3	3	3	3
Nature reserves leased/managed	2	2	4	4	4	4	4
Hectares of land managed for wildlife (leased or owned)	1.49	1.49	70.47	93.07	93	93	93
Number of sites improved for wildlife (working with landowners)					43	60	37
Total hectorage of habitats improved for wildlife:							
Grassland - Ha				9	11	27	12
Woodland (including wet woodland) - Ha				17	25	35	27
Heathland - Ha				0	0		0
Hedgerows - Metres				3190	1,512	853	1708
Wetland (Fen, Marsh, Reedbeds) - Ha				0	-	3	2
Watercourse - Metres				363	130	951	612
Total - Ha				26	36		41
CONNECTING PEOPLE WITH NATURE							
No's people engaged with events	N/A	N/A	N/A	N/A	3,771	4579	3154
Total number of events organised	N/A	N/A	N/A	N/A	153	346	124
Approximate number of visitors to WTBBC sites	N/A	N/A	N/A	200000	200,000	200000	200000
Education Centres in use	2	2	2	2	2	2	2
No's of pupils reached	N/A	N/A	6500	7352	7,657	8430	7556
Number of volunteers				1600	1,222	8742	1885
Total number of volunteer hours				13289	8,468	35681	8161
THE VOICE OF NATURE							
No's of planning applications:							
screened	N/A	N/A	N/A	N/A	38	36	47
responded to	557	75	7	25	26	14	224
No of wildlife sites given advice on	N/A	N/A	N/A	35	3	19	25
EcoRecord number of biological records held	N/A	N/A	525,396	564,388	571,766		
EcoRecord number of records requested	N/A	N/A	N/A		4,767,030		
AN EFFECTIVE ORGANISATION							
No. of staff employed	11	17	19	21	14	16	19
No of trainees/apprentices					3	2	3
Total number of members		1960	2422	3562	3,418	3441	3378
Annual income	327,012	477,529	793,302	957,016	752,686	833,812	977,720
Annual Expenditure	312,963	512,147	839,361	1,132,111	663,736	693,610	796,076
	14,049	- 34,618	- 46,059	-175,095	88,950	140,202	181,644

Risk Management

The Trustees have a duty to identify and review the risks to which the group and charity is exposed and to ensure appropriate controls are in place to provide reasonable assurance against fraud and error.

Internal risks are minimised by the implementation of a Risk Register and Risk Management Policy, reviewed annually by Trustees. Procedures are also in place to ensure compliance with health and safety legislation, policies and procedures including frequent audit of health and safety protocol. We take every effort to minimise our environmental impacts and intend to work towards full environmental impact assessments and audits.

External risks are analysed and attempts made to mitigate or plan for them where possible. Currently identified external risks include (in no particular order) the impact of public sector funding cuts, recent negative fundraising media stories, climate change and globalisation, and the increasing pressures and competing demands for land use for housing, transportation and economic regeneration purposes.

The Trustees have examined the principal areas of the charity’s operations and considered the major risks which may arise in each of these areas. In the opinion of the trustees the charity has established resources and review systems which under normal conditions, should allow the risks identified by them to be mitigated to an acceptable level in its day to day operations.

Future Plans

Future plans are set out in the Trust’s strategy for the next five years and the delivery is detailed in the Business Plan and are summarised in the table below for the next three years.

Additional targets include:

- Developing EcoPark to become a flagship environmental education site for Birmingham with the improvement of facilities to include an indoor classroom and space for volunteers.
- Writing and implementing a Diversity Strategy to ensure we are reaching and engaging all communities across Birmingham and the Black Country.

People and Wildlife	Conservation	Finance and Resources	Fundraising and Profile
Education Dramatic Increase in students having a positive experience with wildlife through Trust based activities and school based support. Tangibles:	Site management and development Create an objective measurement of the quality of our existing sites and establish plans to improve them.	Financial Development Ensure the financial literacy at all levels of the organization is improved through the development of relevant reports and regular training seminars. Revision of the organisation’s key financial	Membership growth A three year plan will ensure that more members will be recruited and attrition rates will be reduced through better promotion and greater value of membership. Tangibles:

<p>Doubling the number of students attending education settings</p>	<p>To review the sites and consider expansion and also if appropriate disposal. Use the sites to provide examples of and encourage good land management by other landowners.</p> <p>Tangibles:</p> <p>All sites graded and individual plans monitored and measured for progress. One site disposed of One new site acquired</p>	<p>ratios towards unrestricted income and reserves will take place.</p> <p>Tangibles:</p> <p>Annual senior management and trustee financial seminar Annual Supervisor and staff seminar Financial section added to staff induction Plan agreed to increase the ratio of unrestricted income and reserves.</p>	<p>Total membership increased to 3,706 (after lapse rates)</p> <p>Attrition reduced from 14% to 8%</p>
<p>Health and Wellbeing New 8 week courses supported by charitable grants, Corporate sponsorship and NHS funding to help individuals improve their Wellbeing via exposure and engagement with nature.</p> <p>Tangibles: Building on pilot courses run to date up to a programme of 18 courses per annum</p>	<p>Living landscapes: habitat and species Continue to attract grants of circa £250k per annum.</p> <p>Tangibles: 3 large projects 30 greenspace projects</p>	<p>HR policies and procedures Ensure the HR policies are fit for a larger organization. Specifically review policies to improve the recruitment and retention of staff. Implement an annual staff and volunteer satisfaction survey. Focus ideas and resources to increase diversity throughout the organization. Implement an organizational development tool e.g. IIP Develop volunteer recruitment and retention plans</p> <p>Tangibles: Develop up to date policies in line with current legislation and ensure training is provided. Develop remuneration policy in line with current market rates. Implement staff survey to receive feedback and ensure actions taken to improve the Trust.</p>	<p>Fundraising from individual donors/ appeals/legacies Detailed plans to exploit current activities such as events as well as develop new fundraising activities will ensure that new individual and family donors will be attracted and nurtured and encouraged to support the Trust in a variety of ways over several years. Corporate donors will be attracted by bespoke events and offers to attract both the employees but also to satisfy organisations' CSR strategies.</p> <p>Tangibles: By year 3 15 corporate supporters 4 major donors 3 major fundraising events per year Overall income to £95.8k</p>

<p>Engagement with the public Significant increase in our events (day/weekend/evenings) at our sites to encourage local people to experience the local wildlife and better appreciate the nature on their doorstep.</p> <p>Tangibles: More than doubling our programme of community and paid events</p>	<p>Conservation contracts There will be a year on year growth in sales and profitability. This will be driven by: Additional marketing New Products Partnership working Local Authority contracts Eco Record Management</p> <p>Tangibles: Income increase to £35k pa 5 Local Authorities contracts Increase of 40 EcoRecord data requests</p>	<p>ICT Development Review and improve the ICT so that reliability is improved, security of data is enhanced and it facilitates flexible and remote working for staff.</p> <p>Tangibles: Investment in IT specifically laptops for staff to promote flexible working. Engage an IT supplier who provides best value support and maintenance at all times</p>	<p>Profile and influence Both People and Wildlife and Conservation have specific targets to increase the trusts influence. Profile will be dramatically raised via social media and distribution of the e-newsletter. Ambassadorial duties to influence local and national politicians will be increased for CEO and Trustees.</p> <p>Tangibles: 6000 social media per month 3,500 people on e-newsletter distribution list 33 leaders influenced per annum</p>
---	--	--	---

Structure, Governance and Management

The Wildlife Trust for Birmingham and the Black Country is one of 46 independent charities, which form a national partnership - The Wildlife Trusts through the Royal Society of Wildlife Trusts. Collectively we manage 2,300 nature reserves covering 98,500 hectares of land for wildlife and for people, inspiring 8.2 million visits to wildlife sites. Together we have 839,745 members. The Trust's family membership is also part of the national environment club, Wildlife Watch, which provides projects for members and affiliated schools, involving them directly with environmental issues.

The Trust is a registered charity (No. 513615) and a company limited by guarantee (No. 1650938). The Trust was established in 1980 to protect our local natural heritage and encourage people to engage, enjoy and get involved with the natural environment. We are a membership organisation, governed by a Memorandum and Articles of Association.

Work is carried out by a staff team total of 19 individuals (at 31 March 2018) 16.2 full time equivalent posts. During the year the Trust had three trainees funded through Heritage Lottery Fund's Skills for the Future programme who completed their traineeship in February 2018. The Trust could not achieve the impacts we do without the commitment and hard work of a large number of volunteers.

In the event of the company being wound up members are required to contribute an amount not exceeding 50p.

Recruitment and appointment of new trustees

A Council of voluntary Trustees is responsible for the overall governance of the Trust. The Trust's Council is elected from the membership in accordance with its governing documents at the Annual General Meeting: Trustees are either co-opted during the year or elected at the Annual General Meeting. Co-opted Trustees must stand for election at the Annual General Meeting immediately following their appointment. Council may co-opt additional members from time to time as it sees fit. Trustees are also Directors of the Company limited by guarantee.

Organisational Structure

The overall responsibility for the charity lies with the Trustee Directors who have delegated the day to day management of the charity to the Chief Executive. The Trustee Directors meet regularly to agree strategy, review progress, review financial information, and discuss policy issues. To facilitate effective operation, the Chief Executive has delegated authority within terms of reference approved by the Trustees for some operational matters, including finance.

The Wildlife Trust is governed by an elected Council and is therefore directly accountable to the members of the charity. The Memorandum and Articles of Association gives Council the powers to:

- (i) Administer the affairs of the Charity
- (ii) Exercise all the powers of the Charity
- (iii) Determine the policy of the Charity

Council formally delegates certain functions and responsibilities to several committees which deal with specific policy and organisational issues. The day to day management of the Charity's affairs is the responsibility of the Chief Executive who is accountable exclusively to the Council for achieving, via the Business Plan, the Wildlife Trust's aims and for complying with Council policies. A team of professionally trained staff report to the Chief Executive.

Induction and training of new trustees

The Trustee is provided with copies of the charity's key documents, including its Memorandum and Articles, Governance Handbook, latest Annual Report and Accounts, minutes of recent Council meetings, policy documents and further information on the role and responsibilities of charity trustees. New Trustees are required to confirm that they have studied these documents and raised any queries or obtained further information which they may need.

Following election or co-option of a Trustee the Chair will introduce a new Trustee at their first meeting of Council. They will also participate in a formal induction process to familiarise them with the extent and nature of the Trust's operations. After election at the Annual General Meeting Trustees serve for a period of 3 years and may be elected for a further period of 3 years.

Developments in Charity Law and Practice are monitored and important developments are brought to the notice of Trustees by the Executive.

The relationship between staff and trustees is crucial to the Trust's continuing success. Trustees bring a range of skills and experience to the responsibilities of the role which requires them to have an understanding of all aspects of the Trust's work. Trustees meet eight times a year where they review strategy and operational performance, set policies and agree budgets.

Key Management Remuneration

None of the Trustees receive remuneration or benefit for their work with the group and charity. Any connection between Trustees and any company the Trust works with is disclosed to the board. Financial details of which are disclosed in note 3 to the accounts.

Related Parties

Wildlife Fundraising Central Limited is a company which was set up with 8 Wildlife Trusts. Part of the setting up arrangement a loan of £10,000 was provided to the company (secured by a fixed & floating charge

The Trust is affiliated to The Royal Society of Wildlife Trusts (RSWT), a registered charity that acts as an umbrella group for county Wildlife trusts and provides assistance and co-ordination of activities and campaigning at a UK Level.

Reference and Administrative Details.

REGISTERED NAME The Wildlife Trust for Birmingham and the Black Country Ltd

COMPANY NUMBER 01650938 (England and Wales)

CHARITY NUMBER 513615

REGISTERED OFFICE Centre of the Earth, 42 Norman Street, Birmingham, B18 7EP

BANKERS Nat West Plc

Chamber of Commerce House

36 Highfield Road, Edgbaston

Birmingham B15 3BJ

AUDITOR

Luckmans, Duckett & Parker Limited

1110 Elliott Court,

Coventry Business Park,

Herald Avenue,

Coventry CV5 6UB

Patron

Miss Gitta Tangye

President

Professor David Bellamy OBE

Vice Presidents

Professor Chris Baines

Peter Shirley MBE (Chair of Trustees)

Professor Ian Trueman

Trust Council (Trustees and Directors)

Needle, S.	Appointed October 2014
Smith, M. (Treasurer)	Appointed October 2014
Anandou, J.	Appointed 19 th January 2016
Trueman, C.	Appointed 19 th January 2016
Crombie, N. (Vice Chair)	Appointed 19 th January 2016
Knight, M.	Appointed 19 th January 2016
Taylor, A.	Appointed 19 th January 2016
Johanne Orchard Webb	Appointed 18 th January 2017
Gus Wood	Appointed 18 th January 2017

Chief Executive

Georgia Stokes	Appointed October 2014
----------------	------------------------

Key Management Personnel

Simon Atkinson
Gareth Morgan
Emma Thompson
Atul Thaker

Statement of trustees' responsibilities

The trustees (who are also directors of The Wildlife Trust for Birmingham and the Black Country Limited for the purposes of company law) are responsible for preparing the Trustees' Annual Report and the financial statements in accordance with applicable law and United Kingdom Accounting Standards (United Kingdom Generally Accepted Accounting Practice).

Company law requires the trustees to prepare financial statements for each financial year, which give a true and fair view of the state of affairs of the charitable company and of the incoming resources and application of resources, including the income and expenditure, of the charitable company for that period. In preparing these financial statements, the trustees are required to:

- select suitable accounting policies and then apply them consistently;
- observe the methods and principles in the Charities SORP 2015 (FRS 102);
- make judgements and estimates that are reasonable and prudent;
- state whether applicable UK Accounting Standards have been followed, subject to any material departures disclosed and explained in the financial statements;
- prepare the financial statements on the going concern basis unless it is inappropriate to presume that the charitable company will continue in operation.

The trustees are responsible for keeping adequate accounting records that disclose with reasonable accuracy at any time the financial position of the charitable company and enable them to ensure that the financial statements comply with the Companies Act 2006. They are also responsible for safeguarding the assets of the charitable company and hence for taking reasonable steps for the prevention and detection of fraud and other irregularities.

In so far as the trustees are aware:

- there is no relevant audit information of which the charitable company's auditor is unaware; and
- the trustees have taken all steps that they ought to have taken to make themselves aware of any relevant audit information and to establish that the auditor is aware of that information.

The trustees are responsible for the maintenance and integrity of the corporate and financial information included on the charitable company's website. Legislation in the United Kingdom governing the preparation and dissemination of financial statements may differ from legislation in other jurisdictions.

Statement as to disclosure of information to Auditors

The members of Trust Council who were in office on the date of approval of these financial statements have confirmed, as far as they are aware, that there is no relevant audit information of which the auditors are unaware. Each of the members of Trust Council have confirmed that they have taken all steps that they ought to have taken as members of Trust Council in order to make themselves aware of any relevant audit information and to establish that it has been communicated to the auditor.

And Finally...

The Wildlife Trust for Birmingham and the Black Country is your organisation. Together we protect and improve local wildlife and natural spaces. The Trust is the natural home for people with a passion for the environment, nature conservation, wild places, Birmingham and the Black Country. Our work is more important than ever as the space for nature decreases with mounting pressures for housing, transportation, food and economic regeneration.

At the Trust we work hard for local wildlife and for local people. We know that the health of our natural environment and our own health, well-being and even prosperity are closely linked. We couldn't do this work without the support and commitment of you, our members or the dedication of our staff and inspirational volunteers.

We would like to thank you all for supporting us during 2017 and 2018 and look forward to working with you in the years to come. We know there are many challenges ahead but also opportunities. Together we can achieve a truly sustainable future for Birmingham and the Black Country where nature flourishes along with people.

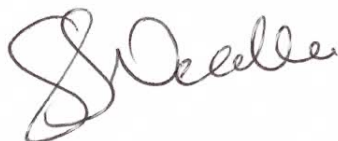
Thank you

You are The Wildlife Trust for Birmingham and the Black Country. Our members make everything possible. Thank you for all your support over the past twelve months. We look forward to working with you to ensure that Birmingham and the Black Country is recognised for the quality and quantity of wildlife that can be found here.

In approving the Trustees' Annual Report, we also approve the Strategic Report included therein, in our capacity as company directors.

On behalf of the board

Signature



Name, Trustee Simon Needle

Date 19/10/2018

**REPORT OF THE INDEPENDENT AUDITOR TO THE MEMBERS OF
THE WILDLIFE TRUST FOR BIRMINGHAM AND THE BLACK COUNTRY LTD
YEAR ENDED 31 MARCH 2018**

We have audited the financial statements of The Wildlife Trust For Birmingham And The Black Country Ltd (the 'charitable company') for the year ended 31 March 2018 which comprise the Statement of Financial Activities, the Balance Sheet and notes to the financial statements, including a summary of significant accounting policies. The financial reporting framework that has been applied in their preparation is applicable law and United Kingdom Accounting Standards (United Kingdom Generally Accepted Accounting Practice).

In our opinion the financial statements:

- give a true and fair view of the state of the charitable company's affairs as at 31 March 2018 and of its incoming resources and application of resources, including its income and expenditure, for the year then ended
- have been properly prepared in accordance with United Kingdom Generally Accepted Accounting Practice applicable to Smaller Entities; and
- have been prepared in accordance with the requirements of the Companies Act 2006.

Basis for opinion

We conducted our audit in accordance with International Standards on Auditing (UK) (ISAs (UK)) and applicable law. Our responsibilities under those standards are further described in the Auditors responsibilities for the audit of the financial statements section of our report. We are independent of the charitable company in accordance with the ethical requirements that are relevant to our audit of the financial statements in the UK, including the FRC's Ethical Standard, and we have fulfilled our other ethical responsibilities in accordance with these requirements. We believe that the audit evidence we have obtained is sufficient and appropriate to provide a basis for our opinion

Conclusions relating to going concern

We have nothing to report in respect of the following matters in relation to which the ISAs (UK) require us to report to you where:

- the trustees' use of the going concern basis of accounting in the preparation of the financial statements is not appropriate; or
- the trustees have not disclosed in the financial statements any identified material uncertainties that may cast significant doubt about the charitable company's ability to continue to adopt the going concern basis of accounting for a period of at least twelve months from the date when the financial statements are authorised for issue.

Other information

The trustees are responsible for the other information. The other information comprises the information included in the annual report, other than the financial statements and our Report of the Independent Auditors thereon

Our opinion on the financial statements does not cover the other information and we do not express any form of assurance conclusion thereon.

In connection with our audit of the financial statements, our responsibility is to read the other information and, in doing so, consider whether the other information is materially inconsistent with the financial statements or our knowledge obtained in the audit or otherwise appears to be materially misstated. If, based on the work we have performed, we conclude that there is a material misstatement of this other information, we are required to report that fact. We have nothing to report in this regard

Opinion on other matters prescribed by the Companies Act 2006

In our opinion, based on the work undertaken in the course of the audit:

- the information given in the Report of the Trustees for the financial year for which the financial statements are prepared is consistent with the financial statements; and
- the Report of the Trustees has been prepared in accordance with applicable legal requirements.

**REPORT OF THE INDEPENDENT AUDITOR TO THE MEMBERS OF
THE WILDLIFE TRUST FOR BIRMINGHAM AND THE BLACK COUNTRY LTD
YEAR ENDED 31 MARCH 2018**

Matters on which we are required to report by exception

In the light of the knowledge and understanding of the charitable company and its environment obtained in the course of the audit, we have not identified material misstatements in the Report of the Trustees. We have nothing to report in respect of the following matters where the Companies Act 2006 requires us to report to you if, in our opinion:

- adequate accounting records have not been kept or returns adequate for our audit have not been received from branches not visited by us; or
- the financial statements are not in agreement with the accounting records and returns; or
- certain disclosures of trustees' remuneration specified by law are not made; or
- we have not received all the information and explanations we require for our audit; or
- the trustees were not entitled to prepare the financial statements in accordance with the small companies regime and take advantage of the small companies exemption from the requirement to prepare a Strategic Report or in preparing the Report of the Trustees.

Responsibilities of trustees

As explained more fully in the Statement of Trustees Responsibilities, the trustees (who are also the directors of the charitable company for the purposes of company law) are responsible for the preparation of the financial statements and for being satisfied that they give a true and fair view, and for such internal control as the trustees determine is necessary to enable the preparation of financial statements that are free from material misstatement, whether due to fraud or error.

In preparing the financial statements, the trustees are responsible for assessing the charitable company's ability to continue as a going concern, disclosing, as applicable, matters related to going concern and using the going concern basis of accounting unless the trustees either intend to liquidate the charitable company or to cease operations, or have no realistic alternative but to do so.

Our responsibilities for the audit of the financial statements

Our objectives are to obtain reasonable assurance about whether the financial statements as a whole are free from material misstatement, whether due to fraud or error, and to issue a Report of the Independent Auditors that includes our opinion. Reasonable assurance is a high level of assurance, but is not a guarantee that an audit conducted in accordance with ISAs (UK) will always detect a material misstatement when it exists. Misstatements can arise from fraud or error and are considered material if, individually or in the aggregate, they could reasonably be expected to influence the economic decisions of users taken on the basis of these financial statements.

A further description of our responsibilities for the audit of the financial statements is located on the Financial Reporting Council's website at www.frc.org.uk/auditorsresponsibilities. This description forms part of our Report of the Independent Auditors.

Use of our report

This report is made solely to the charitable company's members, as a body, in accordance with Chapter 3 of Part 16 of the Companies Act 2006. Our audit work has been undertaken so that we might state to the charitable company's members those matters we are required to state to them in an auditors' report and for no other purpose. To the fullest extent permitted by law, we do not accept or assume responsibility to anyone other than the charitable company and the charitable company's members as a body, for our audit work, for this report, or for the opinions we have formed.



Mark Spafford FCCA ACA (Senior Statutory Auditor)
for and on behalf of Luckmans Duckett Parker Limited
Chartered Accountants
Statutory Auditors
1110 Elliott Court
Coventry Business Park
Herald Avenue
Coventry, CV5 6UB

23rd October 2018

STATEMENT OF FINANCIAL ACTIVITIES

FOR THE YEAR ENDED 31 MARCH 2018

SUMMARY INCOME AND EXPENDITURE ACCOUNT

	Notes	Restricted Funds	Unrestricted Funds	Total 2018	2017
		£	£	£	£
INCOME & ENDOWMENTS FROM					
Donations and legacies	2	-	246,726	246,726	207,101
Other income	2	-	17,369	17,369	15,743
Charitable activities		425,188	288,437	713,625	610,968
Total incoming resources		<u>425,188</u>	<u>552,532</u>	<u>977,720</u>	<u>833,812</u>
EXPENDITURE ON					
Raising funds - Membership	3	-	53,374	53,374	40,360
Charitable activities	4	<u>387,267</u>	<u>355,434</u>	<u>742,701</u>	<u>653,250</u>
Total resources expended	4	<u>387,267</u>	<u>408,808</u>	<u>796,075</u>	<u>693,610</u>
NET INCOME		37,921	143,724	181,645	140,202
NET MOVEMENT IN FUNDS					
		37,921	143,724	181,645	140,202
Total Funds Brought Forward at 1 April 2017		111,211	270,820	382,031	241,829
Total Funds Carried Forward at 31 March 2018	13	<u>149,132</u>	<u>414,544</u>	<u>563,676</u>	<u>382,031</u>

The notes on pages 35 to 45 form part of these financial statements.

The Statement of Financial Activities contains all the recognised gains and losses of the year and it reflects in its entirety the continuing operations of the charity.

BALANCE SHEET

31 MARCH 2018

		2018		2017	
	Notes	£	£	£	£
Fixed assets					
Tangible Assets	6		74,943		25,882
Heritage Assets	7		79,762		79,762
			<u>154,705</u>		<u>105,644</u>
Current assets					
Debtors	8	146,921		116,833	
Cash at bank and in hand		481,411		321,822	
		<u>628,332</u>		<u>438,655</u>	
Liabilities					
Creditors : Amount falling due within one year	9	187,443		106,349	
Net current assets			440,889		332,306
Total assets less current liabilities			<u>595,595</u>		<u>437,950</u>
Creditors (amounts falling due after more than one year)	9		(31,918)		(55,918)
Net Assets			<u>563,677</u>		<u>382,032</u>
Funds					
Restricted funds	11		149,132		111,211
Unrestricted funds		201,255		106,581	
Unrestricted funds - Designated	13	154,050		105,000	
Unrestricted funds - Revaluation reserve	7	59,239		59,239	
		<u>414,544</u>		<u>270,820</u>	
Total Charity Funds			<u>563,676</u>		<u>382,031</u>

Limited Liability

The company is limited by guarantee and in the event of liquidation each member's contribution as defined in clause 7 of the Memorandum of Association is limited to a sum not exceeding 50p (fifty pence).

These financial statements have been prepared in accordance with the special provisions of Part 15 of the Companies Act 2006 relating to small charitable companies.

The notes on pages 35 to 45 form part of these financial statements.

Approved by the Board of Directors and Trustees on 18 September 2018 and signed on its behalf.


Martin Smith - Director and Trustee

STATEMENT OF CASH FLOWS FOR THE YEAR ENDED 31 MARCH 2018

Reconciliation of net movement in funds to net cash flow from operating activities

	2018	2017
Net Movement in Funds	181,644	140,202
Add back Depreciation charge	7,096	8,950
Add back impairment loss	-	-
Add back loss on disposal	-	-
Decrease/ (increase) in Debtors	(30,087) -	25,623
(Decrease)/ increase in Creditors	37,093	44,776
Net cash arising from operating activities	<u>195,746</u>	<u>168,305</u>

Statement of Cash Flows for year ending 31 March 2018

Cashflow from operating activities	<u>195,746</u>	<u>168,305</u>
Cash flows from investing activities	-	-
Interest income	-	-
Purchase of tangible fixed assets	(56,157)	-
Net cashflow from investing activities	<u>(56,157)</u>	<u>-</u>
Cash flows from financing activities		
Repayment of borrowing	(12,000)	(12,000)
Net Cashflow from financing activities	<u>(12,000)</u>	<u>(12,000)</u>
Increase / (decrease) in cash and cash equivalent in the year	<u>127,589</u>	<u>156,305</u>
Cash and cash equivalents at the beginning of the year	321,822	165,517
Cash and cash equivalents at the end of the year	<u>449,411</u>	<u>321,822</u>

1 ACCOUNTING POLICIES

The Wildlife Trust of Birmingham and the Black Country Limited is charitable company limited by guarantee, registered in England and Wales. In the event of the charity being wound up, the liability in respect of the guarantee is limited to 50p per member of the charity. The address of the registered office is given reference and administrative details in the Trustees' report together with the nature of the charity's operations and principal activities.

The principal accounting policies adopted, judgements and key sources of estimation uncertainty in the preparation of the financial statements are as follows:

1.1 Preparation of the financial statements and going concern basis

The financial statements of the charitable company, which is a public benefit entity under FRS102, have been prepared in accordance with the Charities SORP (FRS102) "Accounting and Reporting by Charities: Statement of Recommended Practice applicable to charities preparing their accounts in accordance with the Financial Reporting Standard applicable in the UK and Republic of Ireland (FRS102) issued on 16 July 2014 (as updated through update Bulletin 1 published on 2 February 2016), Financial Reporting Standard FRS102 "The Financial Reporting Standard applicable in the UK and Republic of Ireland" and the Companies Act 2006. The financial statements have been prepared under the historical cost convention as modified by the revaluation of heritage assets. The financial statements are presented in sterling which is functional currency of the charity.

In preparing the accounts the Trustees have considered whether in applying the accounting policies required by FRS102 and the Charity SORP FRS102 the restatement of comparative figures were required. The Trustees consider that no restatements were required upon adoption.

The financial statements have been prepared on a going concern basis. The Directors and Trustees believe that the charity will be able to continue to operate within the current financial arrangements for at least twelve months from the date of approval of these financial statements and that there are no material uncertainties which affect this basis. The Trust continues to be in a state of change and it is recognised that during this period of change there will continue to be financial challenges. The ongoing monitoring of budget and cash flow projections indicates the need for income increases and cost reductions (or both) in this period. The Trustees believe this is achievable.

1.2 Income and Expenditure Account

The charitable company is a non profit making organisation and the results of the year have in accordance with Charities SORP (FRS102) been presented in the form of an income and expenditure account.

1.3 Incoming Resources

Income is generally recognised on a receivable basis and is reported gross of related expenditure, where the amount is reasonably certain and when there is adequate certainty of receipt. The specific bases used are as follows:

- Voluntary income includes members subscriptions, donations (including related gift aid tax) legacies and grants of a general nature.
Income from trading activities includes income earned from fundraising events and trading activities to raise funds for the charity
- Contractual income is recorded when receivable.
- Grants received during the year which relate to the following financial year are carried forward in creditors.

1.4 Resources expended

Expenditure is accounted for on an accruals basis and has been allocated to the appropriate heading in the financial statements.

- Costs of generating funds relate to expenditure incurred in raising voluntary income and fundraising trading costs.
- Charitable activities' expenditure relates to expenditure on meeting the charitable objects.
This includes materials and bought in services, staff costs, information systems, communications, rented accommodation and general management directly chargeable to projects, thereby covering both

1 ACCOUNTING POLICIES**1.5 Resources expended (continued)**

internal costs and external charges for such costs. Such costs incurred internally are apportioned to projects based on direct staffing levels.

- Governance costs are associated with the governance arrangements of the charity and relate to the professional costs of running the charity.
- Support costs including staff costs, information systems, communications, office accommodation and general management, are fully apportioned to other cost categories, and are primarily based on direct staffing levels.
- Membership recruitment costs, where an agency charges the trust a fee based on the first years membership income for recruitment of new members, are charged to the accounts over a period of 10 months. Surplus new income is therefore only accounted for after this period has ended and this policy is viewed as being prudent.

1.6 Tangible fixed assets

Tangible fixed assets are stated at cost (or deemed cost) or valuation less accumulated depreciation and accumulated impairment losses. Cost includes costs directly attributable to making the asset capable of operating as intended.

Depreciation is calculated to write off the book value of each tangible fixed asset over its expected useful life at the following rates:-

Centre Of The Earth	4% straight line (see note 6)
People and Wildlife Centre	Yearly impairment review
Fixtures, Fittings & Equipment	25% straight line
Motor vehicles	25% reducing balance basis
Freehold Land (hereafter described as land)	5 yearly revaluation (no depreciation provided)

Expenditure on fixtures, fittings and general office equipment purchased by the charity for projects is currently written off in the year in which the expenditure is incurred, expenditure incurred for administration purposes is capitalised and depreciated as stated above.

Land, classified as heritage assets, had previously been included in the accounts at cost. The trustees revalue the assets every 5 years (a change from the previous annual approach) as this provides more relevant information on the activities and assets held by the charity.

Where information on the cost or valuation of heritage assets is not available or the cost of providing such information significantly outweighs any benefit to the users of the accounts then heritage assets are not recognised on the balance sheet.

Acquisitions only arise when donated to the charity or if it is believed that they will further the charity's objectives.

Full details of original cost can be found in note 7 to the accounts.

1.7 Operating Leases

Payments under an arrangement which is in substance of a rental nature (operating leases) are charged in the financial statements as incurred.

1.8 Pensions

The trust makes payments of employers contributions into independently administered money purchase pension policies for qualifying employees. Pension costs are charged in the financial statements on an accruals basis.

Basic Financial Instruments

Basic financial instruments are initially recognised at transaction value and subsequently measured at their settlement value with the exception of bank loans which are subsequently measured at amortised cost using the effective interest method

1 ACCOUNTING POLICIES

1.9 Debtors and creditors receivable / payable within one year

Debtors and creditors with no stated interest rate and receivable or payable within one year are recorded at transaction price. Any losses arising from impairment are recognised in expenditure.

1.10 Loans and borrowings

Loans and borrowings are initially recognised at the transaction price including transaction costs. Subsequently, they are measured at amortised cost using the effective interest rate method, less impairment. If an arrangement constitutes a finance transaction it is measured at present value.

Cash at bank and in hand

Cash at bank and cash in hand includes cash and short term highly liquid investments with a short maturity of three months or less from the date of acquisition or opening of the deposit or similar account.

1.11 Volunteer help

It is not current policy to place a value on the time volunteered by Trustees, Directors or temporary or occasional volunteers.

1.12 Fund Accounting

Restricted funds - these are funds received for undertaking an activity specified by the donor.

Unrestricted funds - these are funds which can be used in accordance with the charitable objects at the discretion of the Trustees.

Designated funds comprise unrestricted funds that have been set aside by the trustees for particular purposes.

The aim and use of each designated fund is set out in the notes to the financial statements.

1.12 Irrecoverable Vat

Due to the varied VAT status of incoming resources, the charitable company cannot recover all input VAT. The irrecoverable VAT is allocated to the appropriate cost categories

2 Analysis of Income from Donations and Legacies

	Restricted Funds	Unrestricted Funds	Total 2018	Total 2017
	£	£	£	£
Doantions and Legacies				
Members subscriptions & donations (including gift aid)	-	239,669	239,669	207,101
Legacies	-	7,057	7,057	-
	-	246,726	246,726	207,101
Other income				
Other income	-	17,369	17,369	15,743
	-	17,369	17,369	15,743

3 Analysis of Total Resources Expended

	Direct Costs £	Support Costs £	Total 2018 £	Total 2017 £
Raising Funds				
Costs of raising voluntary income	53,374	-	53,374	40,360
Fundraising trading: costs of services and other costs	-	-	-	-
	<u>53,374</u>	<u>-</u>	<u>53,374</u>	<u>40,360</u>
Charitable Activities				
Conservation, Engagement & Influence	597,405	137,502	734,906	634,315
Governance costs being audit, accountancy & legal fees	-	7,795	7,795	18,934
	<u>597,405</u>	<u>145,297</u>	<u>742,701</u>	<u>653,250</u>

(See note 5)

The above costs include:-	2018 £	2017 £
Depreciation of tangible fixed assets - owned	7,096	8,950
Bad Debt write off	0	5,112
Operating lease rentals	14,133	24,613
Equipment lease rentals	6,482	2,393
Auditors remuneration	5,000	5,000
Auditors accountancy fees	0	1,000
Pension costs	<u>24,345</u>	<u>20,911</u>

4 Allocation of Support Costs

	Cost of generating funds £	Charitable activities £	Total 2018 £	Total 2017 £
Management staff costs	-	10,013	10,013	5,805
Premises and administrative	-	135,284	135,284	119,130
Total support costs allocated	<u>-</u>	<u>145,297</u>	<u>145,297</u>	<u>124,935</u>

5 Staff costs

No remuneration was paid to the trustees in the year nor were any expenses reimbursed to them.

	2018 £	2017 £
Total emoluments :-	£	£
Staff wages	379,848	346,429
Pension contributions	24,345	20,911
Employer's national insurance	32,749	26,958
	<u>436,942</u>	<u>394,297</u>

Average number of employees by category (and also average monthly head count):-

Direct charitable work	17	15
Fundraising	-	0
Administrative	1	1
	<u>18</u>	<u>16</u>

There are no employees earning in excess of £60,000.

The number of employees to whom retirement benefits are accruing was as follows:-

	<u>15</u>	<u>12</u>
--	-----------	-----------

The key management personnel, the senior management team, received total employee benefits in the year of £164,325 (2017 - £129,603).

The key management personnel comprise of the trustees, Chief Executive Officer, Finance Manager, Conservation manager, People & Wildlife manager and the new created position of Fundraising & Development Manager of Fundraising & Development manager.

6 Tangible Fixed Assets

	Centre Of The Earth	People & Wildlife Centre	Fixtures, Fittings & Equipment	Total
	£	£	£	£
COST				
1 April 2017	151,578	82,099	45,968	279,646
Additions	43,460	-	12,698	56,158
Disposals	-	82,099	-	82,099
31 March 2018	195,038	-	58,666	253,704
DEPRECIATION				
1 April 2017	127,017	82,099	44,648	253,764
Charge for the year	5,090	-	2,006	7,096
Eliminated on disposal	-	82,099	-	82,099
Impairment	-	-	-	-
31 March 2018	132,107	-	46,654	178,761
NET BOOK VALUE				
31 March 2018	62,931	-	12,012	74,943
31 March 2017	24,561	-	1,320	25,882

The Centre Of The Earth is built on land which is leased from Birmingham City Council on a twenty five year lease from 24 March 1998.

The net book value as at 31 December 1997 is being written off over the term of the lease by equal annual instalments.

The People and Wildlife Centre cost relates to expenditure incurred on professional design studies for future accommodation requirements of the Charity. Due to the current financial position and the general economic climate the trustees have taken the decision that the project will no longer proceed and it therefore has been fully written off under an impairment adjustment in 2016. This has been disposed of in the year as the cost has been written off in full.

7 Heritage Fixed Assets

	Total Land £
COST/REVALUATION	
1 April 2017	79,762
Additions	-
Disposals	-
31 March 2018	<u>79,762</u>
DEPRECIATION	
1 April 2017	-
Charge for the year	-
Eliminated on disposal	-
31 March 2018	<u>-</u>
NET BOOK VALUE	
31 March 2018	<u>79,762</u>
31 March 2016	<u>79,762</u>

Cost or valuation at 31 March 2018 is represented by:-

	£
Valuation in 2018	79,762
Cost	<u>-</u>

If the Land had not been revalued it would have been included in the accounts at the following historical cost

	2018 £	2017 £
Cost - amount paid for land	10,523	10,523
Cost - donated value of land	10,000	10,000
	<u>20,523</u>	<u>20,523</u>

Heritage assets consist of land at Portway Hill, Pelsall Common Spinney (Turner's Wood) and Deer's Leap Wood. The land has been valued by the trustees at the year end using standard prices based on the current value in the area for woodlands (14 acres or less) of £6,000 per acre.

Such land that has been acquired or donated to the charity is managed and preserved in accordance with the charity's objectives for wildlife and their habitat. Access to such land is available to the general public.

Other heritage assets may be purchased by, or donated to the charity, as and when circumstances permit.

5 year summary:-

	Additions £
Acquired in - 2014 Deers Leap Wood	<u>1</u>
	<u>1</u>

NOTES TO THE FINANCIAL STATEMENTS (CONTINUED)

31 MARCH 2018

8 Debtors	2018	2017
	£	£
Due after more than one year:-		
Long term loan to associated undertaking (note 15)	10,000	10,000
Amounts falling due within one year:-		
Trade debtors	101,376	70,348
Other debtors	-	0
Prepayments	35,545	36,485
	<u>146,921</u>	<u>116,833</u>

9 Creditors	2018	2017
	£	£
Amounts falling due within one year:-		
Bank overdraft (secured)	-	-
Other Loans - The Wildlife Trusts	24,000	12,000
Trade creditors	60,473	74,878
Social security and taxation	55,314	7,152
Deferred Income	32,000	-
Other creditors	15,655	12,319
	<u>187,443</u>	<u>106,349</u>
Amounts falling due after more than one year:-		
Other Loans - The Wildlife Trusts	31,918	55,918
	<u>31,918</u>	<u>55,918</u>

The loan from The Wildlife Trusts is repayable in equal instalments of £2,000 per month. The remaining balance due after more than one year is subject to an ongoing review of the repayment terms but no earlier than 31 March 2018.

The bank overdraft is secured by a legal mortgage over the Centre Of The Earth and a fixed and floating charge over all other assets of the charity.

10 Other financial commitments

a) Project commitments

The charity has no commitments on its projects except where funding has already been received in advance at 31 March 2018.

b) Operating Leases - as at 31 March 2018 the charity had the following future minimum rentals payable in respect of non-cancellable operating leases.

	2018	£	2017	£
Land & buildings:-				
Leases expiring within one year	625		3,125	
Leases expiring within two to five years	0		0	
Leases expiring after more than five years	39,100		32,250	
	<u>39,100</u>		<u>32,250</u>	
c) Equipment Lease				
Photocopier				
Leases expiring within two to five years	6139		0	
	<u>6139</u>		<u>0</u>	

11 Funds of the Charity

The restricted fund represents monies receivable for projects which can only be spent on their respective activities as imposed by the donor or grant making body and are analysed as follows:-

	At		At		
	1 April 2017	Incoming	Outgoing	Transfers	31 March 2018
	£	£	£	£	£
Conservation work					
Accord Group	-	2,000	2,000	-	-
Friends of Hill Hook	-	500	500	-	-
Friends of Moseley Bog	-	4,979	4,979	-	-
Peascroft Wood HLF	6,187	-	6,187	-	-
Pelsall Common Spinney aka Turners Wood	3,706	-	2,892	-	814
Esmee Fairbairn Foundation	26,523	105,400	104,913	-	27,010
Tesco bags of Help - Peascroft	1,000	-	1,000	-	-
Tesco bags of Help - Turners Wood	5,000	-	5,000	-	-
Tesco Bags of Help Friends of Group	-	4,956	4,956	-	-
Tame Sub-Hosting, Catchment	-	6,000	6,000	-	-
Wolverhampton Roadshows Tesco Bags of Hel	-	1,000	1,000	-	-
Veolia Grant	-	38,400	38,400	-	-
S106 Deer's Leap Annual Ranger Services	-	6,000	6,000	-	-
Dears Leap Tesco Bags For Help	-	2,000	2,000	-	-
Tesco Bags for Help Rowley Hills	-	1,000	1,000	-	-
Salmon in the Stour	-	63,180	26,090	-	37,090
Environment Agency	-	12,500	-	-	12,500
Awards For All - Peascroft	-	10,000	-	-	10,000
Catchment (Western Power)	23,400	-	-	-	23,400
Birmingham Natural History Society	-	2,000	-	-	2,000
Wolverhampton CC - ERDF	-	5,076	5,076	-	-
TOTAL	65,816	264,991	217,993	-	112,814
Planning & Advocacy work					
Birmingham LNP	7,000	14,000	21,000	-	-
Biodiversity Wolverhampton	-	5,000	5,000	-	-
Biodiversity Sandwell	-	5,000	5,000	-	-
Black Country LNP	-	7,000	7,000	-	-
TOTAL	7,000	31,000	38,000	-	-
People & Wildlife					
Tesco Bags of Help Centre of the Earth	9,000	-	9,000	-	-
Veolia Project - Eco Park	1,000	-	1,000	-	-
brandwood HLF	-	3,850	3,850	-	-
Tesco Bags of Help EcoPark	-	1,000	1,000	-	-
HLF Skills for the Future	-	18,300	18,300	-	-
Tesco Bags of Help COE health	-	1,000	1,000	-	-
Children In Need	-	10,000	6,250	-	3,750
Woodland Trust	-	900	900	-	-
TOTAL	10,000	35,050	41,300	-	3,750
EcoRecord					
HS2 EcoRecord	8,400	-	4,200	-	4,200
Environment Agency	-	8,891	8,891	-	-
Birmingham City Council	-	19,716	19,716	-	-
Wolverhampton EcoRecord	-	4,585	4,585	-	0
Walsall EcoRecord	-	5,450	5,450	-	0
Sandwell EcoRecord	-	5,605	5,605	-	-
Dudley EcoRecords	-	5,940	5,940	-	-
TOTAL	8,400	50,187	54,387	-	4,200
Resources (Development)					
HLF Transition Fund	19,495	43,800	34,928	-	28,367
Esmee Fairbairn	500	-	500	-	-
Worth Ltd	-	160	160	-	-
TOTAL	19,995	43,960	35,588	-	28,367
SUMMARY	111,211	425,188	387,267	-	149,132

Transfers are made between Restricted and Unrestricted Funds at the time the specific restrictions have been fulfilled.

The Trustees confirm that all restricted fund balances at the year end have subsequently been spent or will be spent in the forthcoming financial year.

Conservation

Restricted funds for the Trust's Conservation work delivers against strategic Goal 1 and includes:

- Managing our Nature Reserves (Friends of Hill Hook and Moseley Bog, Peascroft Wood HLF, Pelsall Common, Tesco Bags of Help, S106 Rangers Service for Deer's Leap, Awards for All, Veolia for Moseley Bog)
- Improving spaces for nature through the Nature Improvement Area (Esmée Fairbairn Foundation)
- Ecological surveys (Accord, Environment Agency, Royal Botanical Gardens)
- Development of water catchment improvement works along the River Stour (Salmon in the Stour)
- Delivery of water catchment sub-host coordination (Tame Sub-Hosting)
- Expansion of Growing Local Flora providing biological materials to improve woodlands (Wolverhampton CC – ERDF)
- Catchment (Western Power) – improvement of water course quality in Daffodil Park, Birmingham.

Planning & Advocacy

- Local Nature Partnership – delivery of Secretariat function for the Birmingham and Black Country Local Nature Partnership.
- Biodiversity – service level agreement with local authorities supporting biodiversity improvement activities including surveying sites and advising planners.

EcoRecord

- Service Level Agreements to provide ecological records and services from the biological records centre for Birmingham and the Black Country.

People and Wildlife

- Brandwood HLF – Supporting the Friends of Brandwood Cemetery to improve habitat for hedgehogs
- Tesco Bags of Help EcoPark for delivering a youth engagement programme
- Tesco Bags of Help Centre of the Earth for delivery a health & well being in nature programme
- Children in Need – delivery of activities for children and families experiencing social deprivation.
- HLF Skills for the Future – delivery of Natural Prospects trainee programme
- Veolia EcoPark – site improvements
- Woodland Trust - Contract to deliver the trees for schools project

Resources

- HLF Transition Fund – improvements to internal systems to make Trust more effective including improved CRM system and development of income generation activities
- Esmée Fairbairn Foundation – development of Business Plan

12 Analysis of fund balances between the net assets

	Restricted Funds	Unrestricted Funds	Total 2018	Total 2017
	£	£	£	£
Tangible fixed assets	10,000	64,942	74,942	25,881
Heritage assets	-	79,762	79,762	79,762
Debtors	-	146,921	146,921	116,833
Cash	139,132	342,279	481,411	321,822
Creditors- due within one year	-	(187,443)	(187,443) -	106,349
Creditors- due after more than one year	-	(31,918)	(31,918) -	55,918
	<u>149,132</u>	<u>414,543</u>	<u>563,675</u>	<u>382,031</u>

13 Designated fund

The designated fund of £154,050 (2017: £105,000) relates to the balance of funds received in the accounts for the year to 31 March 2018 remaining unspent but designated by the Trustees for use on our commitments post year end.

14 Related party transactions

Wildlife Fundraising (Central) Limited is a company set up in 2013 by eight Wildlife Trusts following the demise of a previously used fundraising company. As part of the setting up arrangement each trust was to provide a loan to the company. The Wildlife Trust for Birmingham and the Black Country Limited provided £10,000 (secured by a fixed and floating charge) as shown in the balance sheet in debtors over 1 year and as such the new company is an associated undertaking. Loan interest received in respect of the loan was £335 (2017: £331).

There is no share capital as the company is limited by guarantee. The Trusts liability is limited to £1 in the event of liquidation. The Wildlife Trust for Birmingham and the Black Country Limited paid commission amounting to £36,816 (net of VAT) (2017 - £48,891) to Wildlife Fundraising (Central) Limited during the year, and the Trust owes the company a balance of £5,616 (gross) (2017 - £26,174) at the year end for commission invoiced but not yet paid.

The Trust is affiliated to The Royal Society of Wildlife Trusts (RSWT), a registered charity that acts as an umbrella group for county wildlife trusts, and provides assistance and co-ordination of activities and campaigning at a UK level. An annual contribution is payable to RSWT amounting to £10,190 (2017 £10,170). The trust also purchased publications and other sundries from RSWT amounting to £8,528 (2017 - £9,495), with £1,403 (2017 - £4,778) owed to RSWT at the year end. Sales made to RSWT were £2,949 (2017: £3,084) and amounts owed by RSWT were £280 at the year end (2017: £145).

Details of a loan from RSWT to the Trust can be found in note 9 to the accounts.

During the year, goods and services of £5,737 was purchased from an LLP in which trustee, Mr S Needle was a partner.

Donations of £40,000 were received without conditions from charitable trusts in which trustees of this charity are also trustees of the donor charitable trusts.

15 Comparatives figures 2016-2017 for the Statement of Financial Activities

	Restricted Funds	Unrestricted Funds	Total Funds 2017
	£	£	£
INCOME & ENDOWMENTS FROM			
Donations and legacies	500	206,601	207,101
Trading and other income	-	15,743	15,743
Charitable activities	302,457	308,511	610,968
Total incoming resources	<u>302,957</u>	<u>530,855</u>	<u>833,812</u>
EXPENDITURE ON			
Raising funds - Membership	-	40,360	40,360
Raising funds - Trading	-	-	-
Charitable activities	269,078	384,172	653,250
Impairment loss -exceptional item	-	-	-
Total resources expended	<u>269,078</u>	<u>424,532</u>	<u>693,610</u>
NET INCOME BEFORE TRANSFERS	33,879	106,323	140,202
Gross transfers between Funds	-	-	-
NET INCOME) FOR THE YEAR AND NET MOVEMENT IN FUNDS	33,879	106,323	140,202
Total Funds Brought Forward at 1 April 2016	77,332	164,497	241,829
Total Funds Carried Forward at 31 March 2017	<u>111,211</u>	<u>270,820</u>	<u>382,031</u>